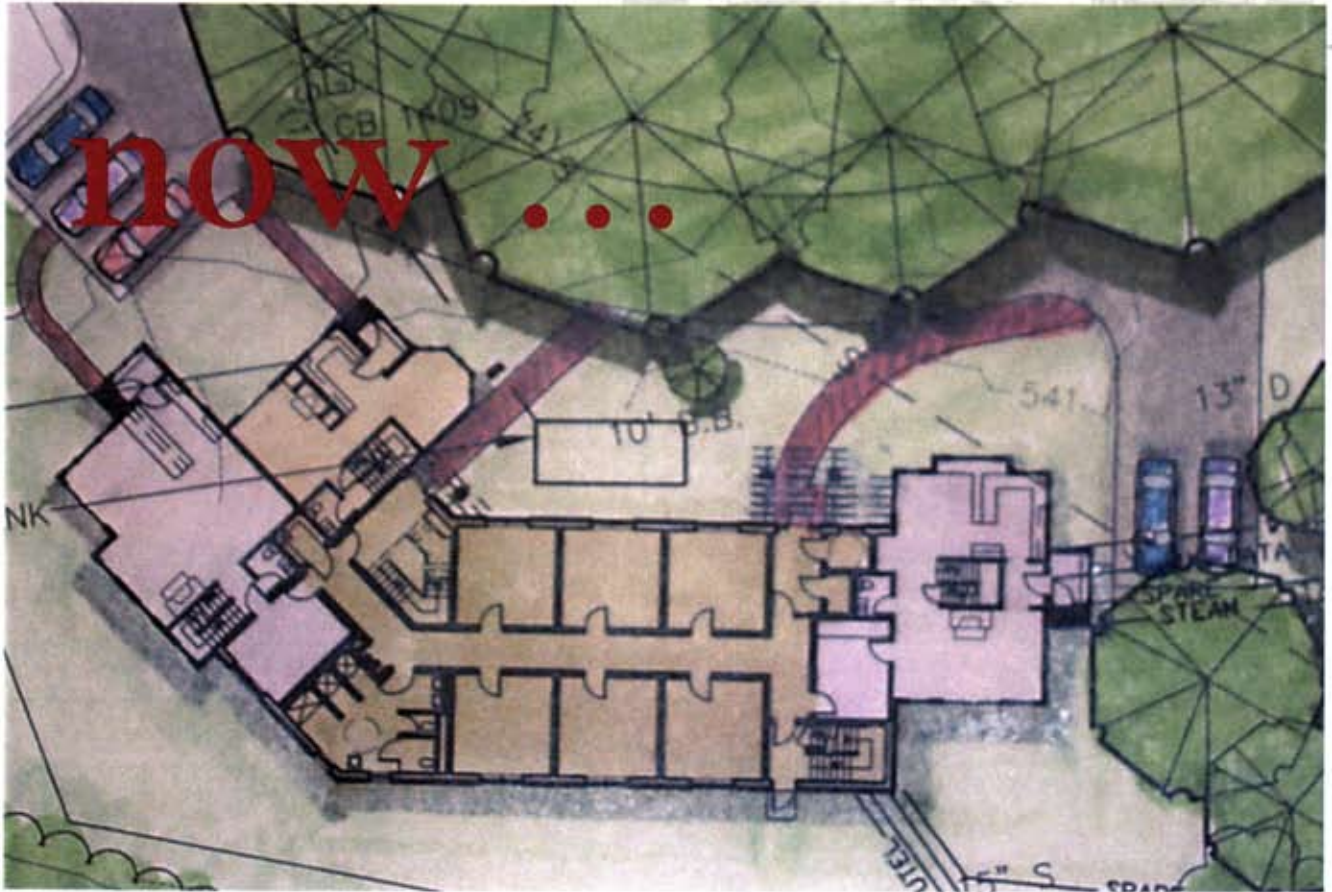


The
time
is



now ...



Holderness School



... to complete the long-sought student and faculty residence on the Holderness Campus.

There is no secret to the formula for an outstanding independent secondary school: recruit and retain the most talented teachers you can find; attract the most promising students our middle schools have to offer; then put them all together in a welcoming environment.

It was to strengthen Holderness' command of this formula that the School and its community recently carried out The Holderness Challenge. The remarkable success of this \$15 million campaign has already provided resources for faculty professional development and student financial aid; the construction of the Alford Library, the Gallop Athletic Center, and the Edwards Art Gallery; and the renovation of the Carpenter Arts Center and the Schoolhouse. Talent and promise and a compelling educational milieu continue to be found together at Holderness.

But the fruits of any capital campaign — especially when construction projects are involved — unfold over time. All needs cannot be met at once, all projects cannot be accomplished overnight, and the timing of any single project in no way qualifies its importance.

As crucial as any of the goals of The Holderness Challenge is the enhancement of student residential life. Marshall Dormitory, built over sixty years ago as a "temporary" facility, has thoroughly outlived its practical use as a boys' dormitory, and of course the Cottage, which was rotting and falling over its embankment, could not be effectively upgraded. In recent years, meanwhile, our most experienced faculty have gravitated to the girls' dorms on the south end of campus, where exist the best faculty housing facilities. In 1992, in preparing for the capital campaign, the School accepted a design for a new boys' dormitory to replace Marshall and the Cottage at a cost of one million dollars.

Named Gift Opportunities

Boys' Dormitory

Dormitory	\$1,000,000	Secured
West Faculty House	\$250,000	Needed
East Faculty House	\$250,000	Needed
Faculty Apartment	\$175,000	Needed

Holderness School

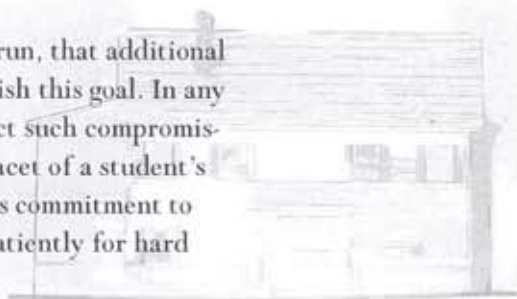
Now, with most other needs of the School's physical plant substantially answered, Holderness is preparing to build this sorely needed dormitory. Not surprisingly, however, the costs of building the facility as originally designed have risen in the last seven years. This is one of the routine perils of long-term planning.

Other perils involve changes in circumstances. After this year, the state fire marshal will no longer allow the School to use the third floor of Livermore as dormitory space. If we are to provide enough beds, while maintaining our 8:1 student/faculty ratio in the dorms, we will need two faculty houses and one faculty apartment in the 24-bed facility. Also, we have decided to adopt recommendations that will make this building sturdier, more durable, and easier to maintain than would have been possible with our original specifications. In the long run, this will save the School money.

But all this means that, in the short run, that additional funding must be secured in order to accomplish this goal. In any event, the School can no longer afford to exact such compromises in the quality of its residential life. This facet of a student's experience here is at the heart of the School's commitment to its students. The north campus has waited patiently for hard proof of this commitment. Now is the time.

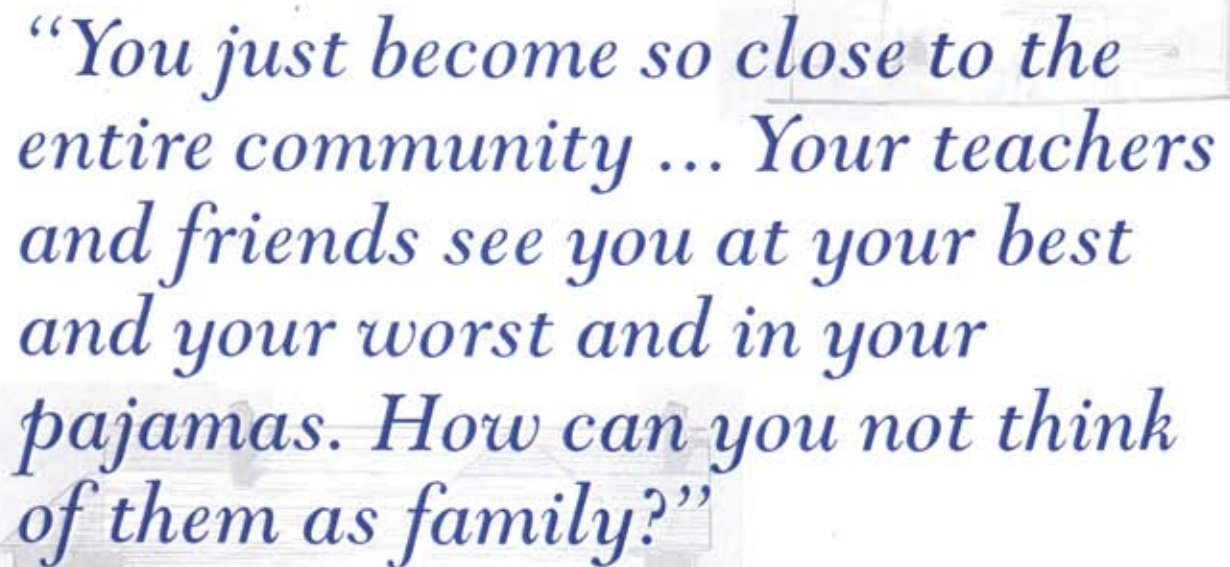
Now also is the time, therefore, for the School's friends to make an extraordinary personal impact on the character of the Holderness Experience. Lydia Griffin '96 once said about her residential life here: "You just become so close to the entire community ... Your teachers and friends see you at your best and your worst and in your pajamas. How can you not think of them as family?"

Ours is an extended family that includes alumni and parents and the many friends of the School. We all share in the benefits of a safe and durable housing environment in which our youngsters and teachers may all live, one that will continue to appeal to the most talented teachers and the most promising students. Similarly, we all share in the opportunity now to keep that time-tested formula a reality at Holderness for many years to come.



To enhance the quality of student and faculty life through the construction of a new 24-bed dormitory, Holderness School seeks to raise \$1.6 million for construction, of which \$1 million has already been secured through the Holderness Challenge capital campaign.

Holderness School



“You just become so close to the entire community ... Your teachers and friends see you at your best and your worst and in your pajamas. How can you not think of them as family?”



For more information, contact
Holderness School

Office of Development & Alumni Relations

RR 3, Box 18

Plymouth, NH 03264

(603) 536-1742

Fax: (603) 536-2125

Email: alum@holderness.org

Website: www.holderness.org